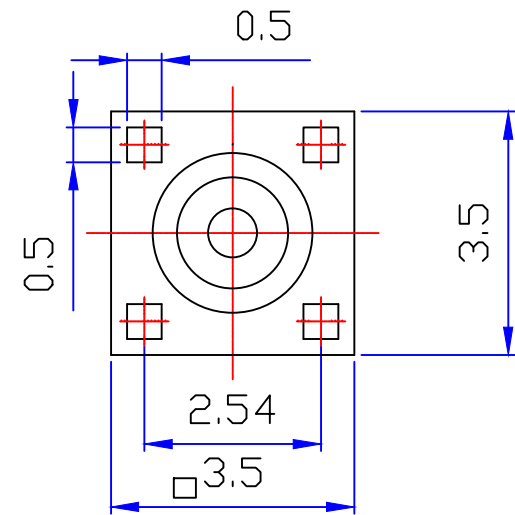
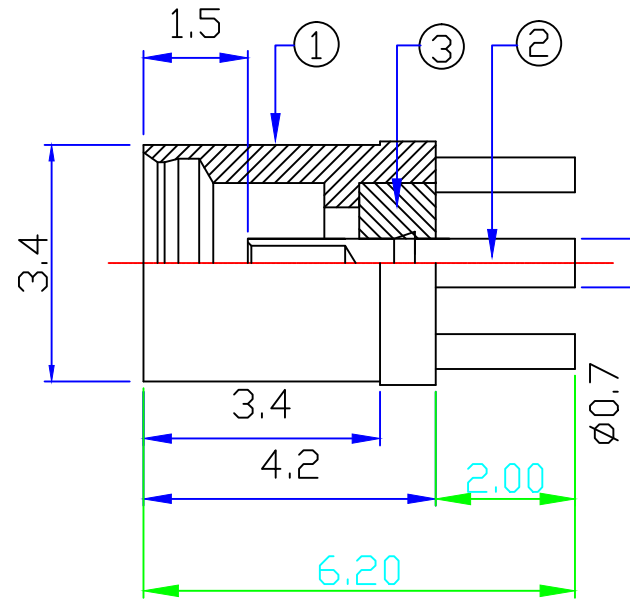
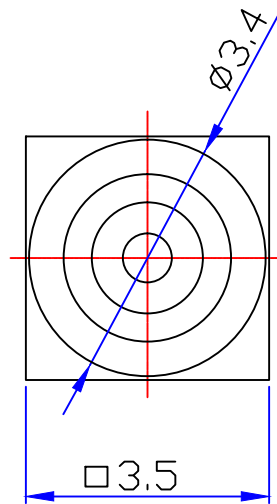
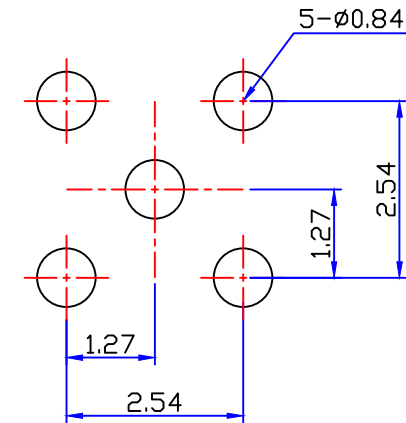


REV	DESCRIPTION	DSG	APR	DATE



\*PCB Mount



NOTE :

- Material and Finish  
 Center contact : Beryllium Copper / Gold  
 Body : Brass / Gold  
 Insulator : PTFE

2. Specification

Operating Temperature : -45 ~ 120C°  
 2002/95/EC (RoHS) : Compliant

UNLESS OTHERWISE SPECIFIED					SCALE	MM	UNIT	1:1	TITLE			
DIMENSION	0	0.0	0.00	0.000	ANGLE	PROJ		REV	1.0	MMCX(F)S/T 4R PCB		
TOLERANCE	±0.5	±0.1	±0.03	±0.01	±0.5				DWG NO.			
<b>알에프시엠</b>					DESIGN	CHECK	APPRO.	Material				
								KS-D-5101 C3604BD				
								Finish				
					2017. 3.24			SEE NOTE 1   1 of 1   A4				